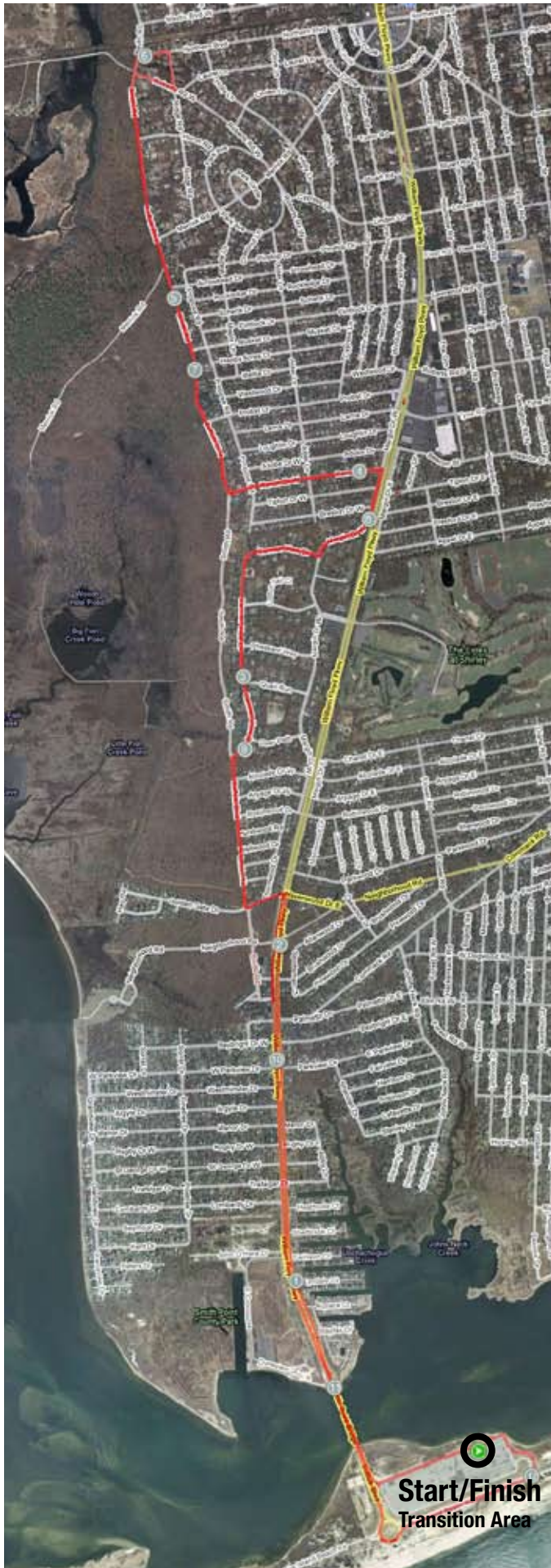


Smith Point Triathlon™ Long Island Triathlon Tour™



Bike course: 20 Kilometers

Start and finish takes place at Smith Point County Park Parking Area.

Head North over Smith Point Bridge.

Continue North on William Floyd Parkway (CR46) to a left on Havenwood Drive.

Right on Smith Road.

Right on Carmenview Drive.

Left on Margin Drive West.

Left on Ranch Drive.

Right on Roberts Road.

Left on Ridge Drive.

Left on Northern Boulevard.

Left on Smith Road.

Left on Ranch Drive.

Right on Margin Drive West.

Right on Carmen View Drive.

Left on Smith Road.

Left on Havenwood Drive.

Right on William Floyd Parkway (CR46).

Over Smith Point Bridge.

Around traffic circle onto Fire Island Beach Road (CR75).

Thru the toll booths
back into the parking lot to transition.